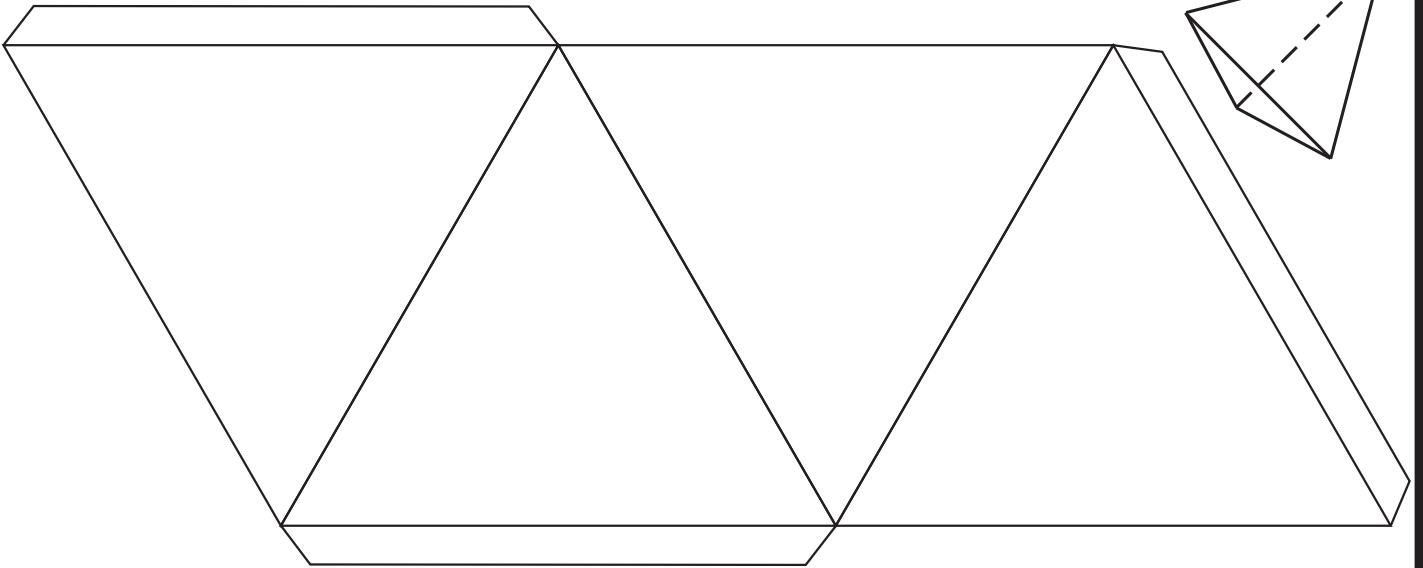
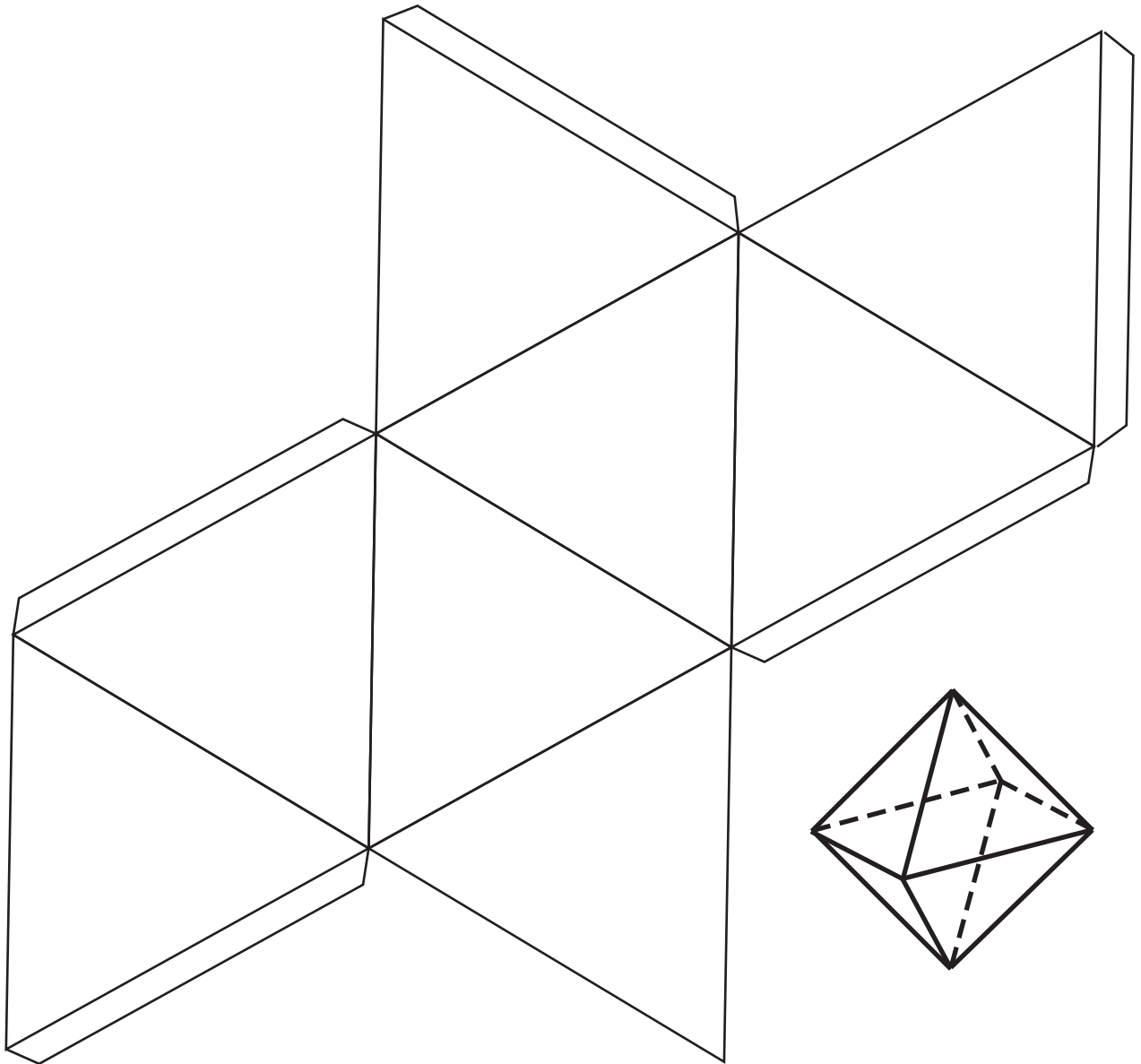


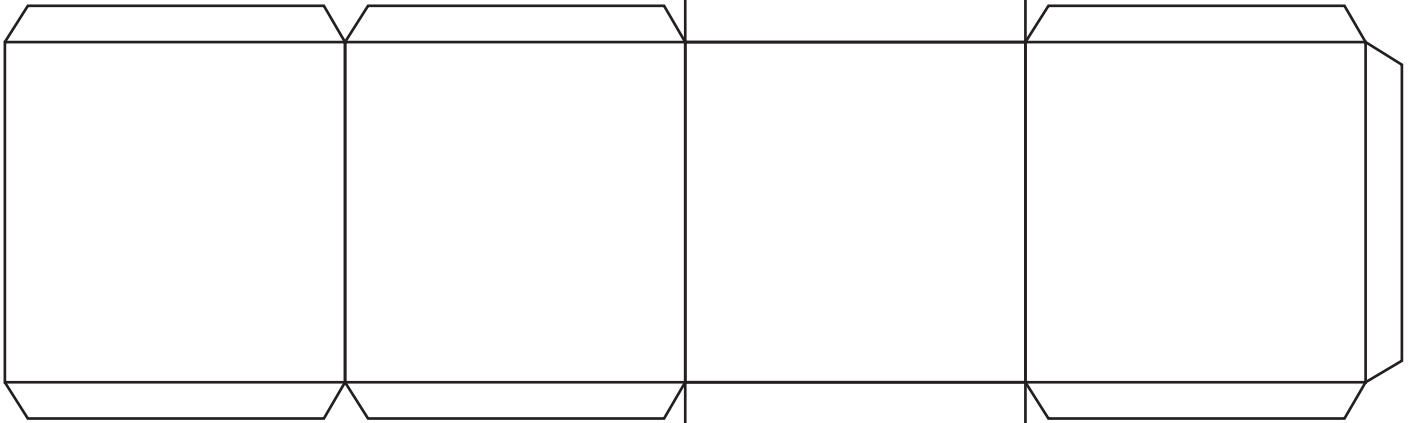
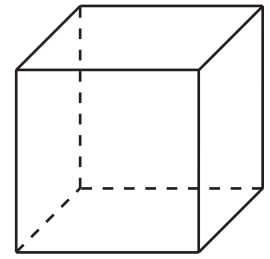
PLATONIC SOLIDS: REGULAR TETRAHEDRON, Fire



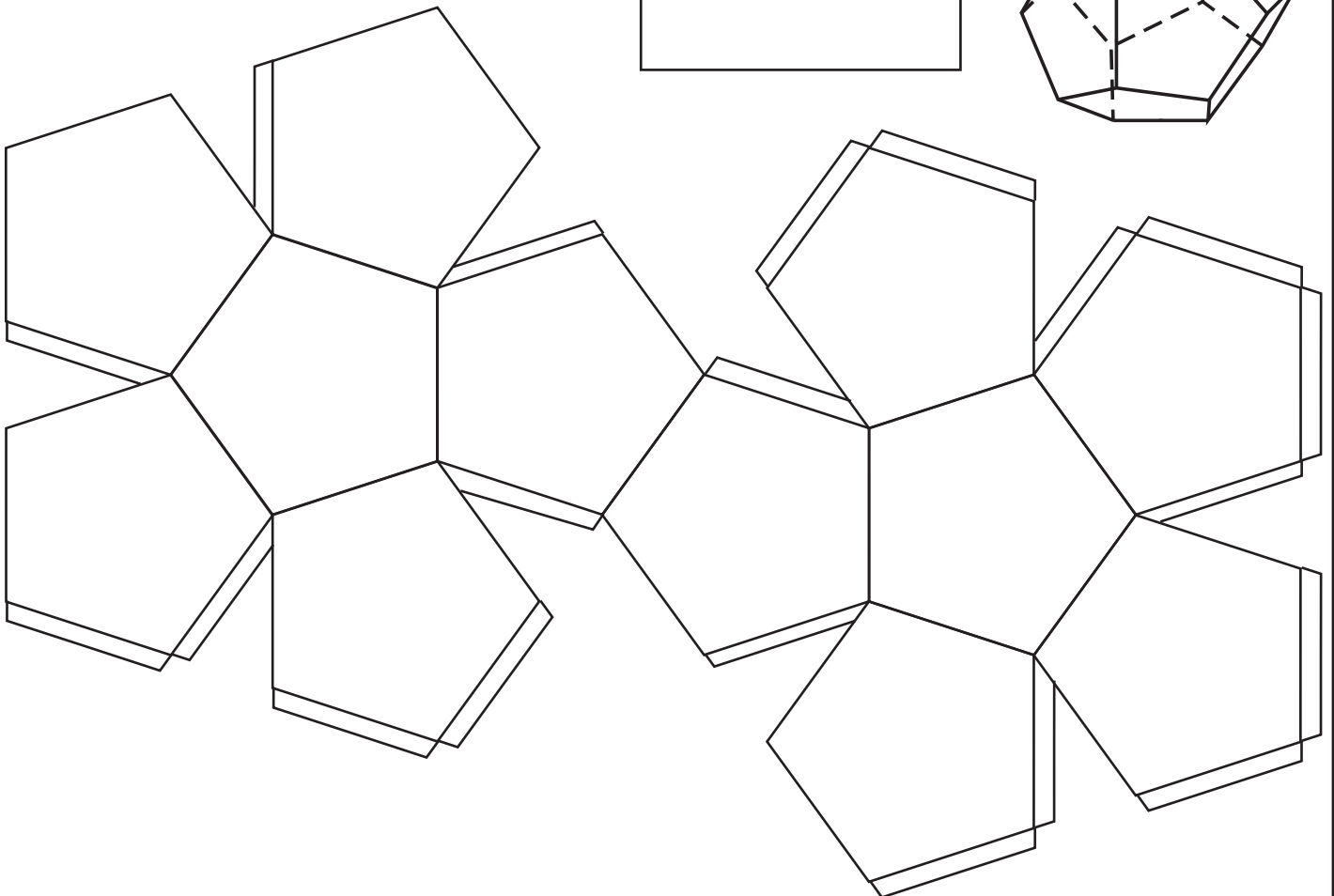
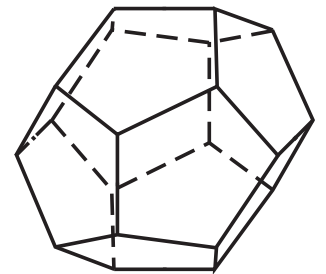
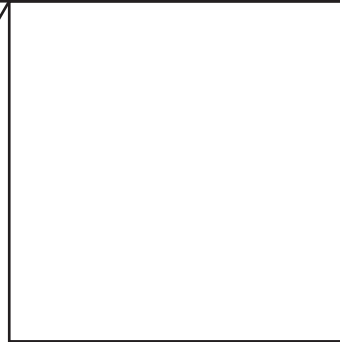
PLATONIC SOLID: REGULAR OCTAHEDRON : Air

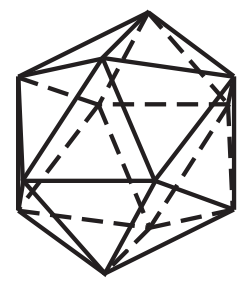
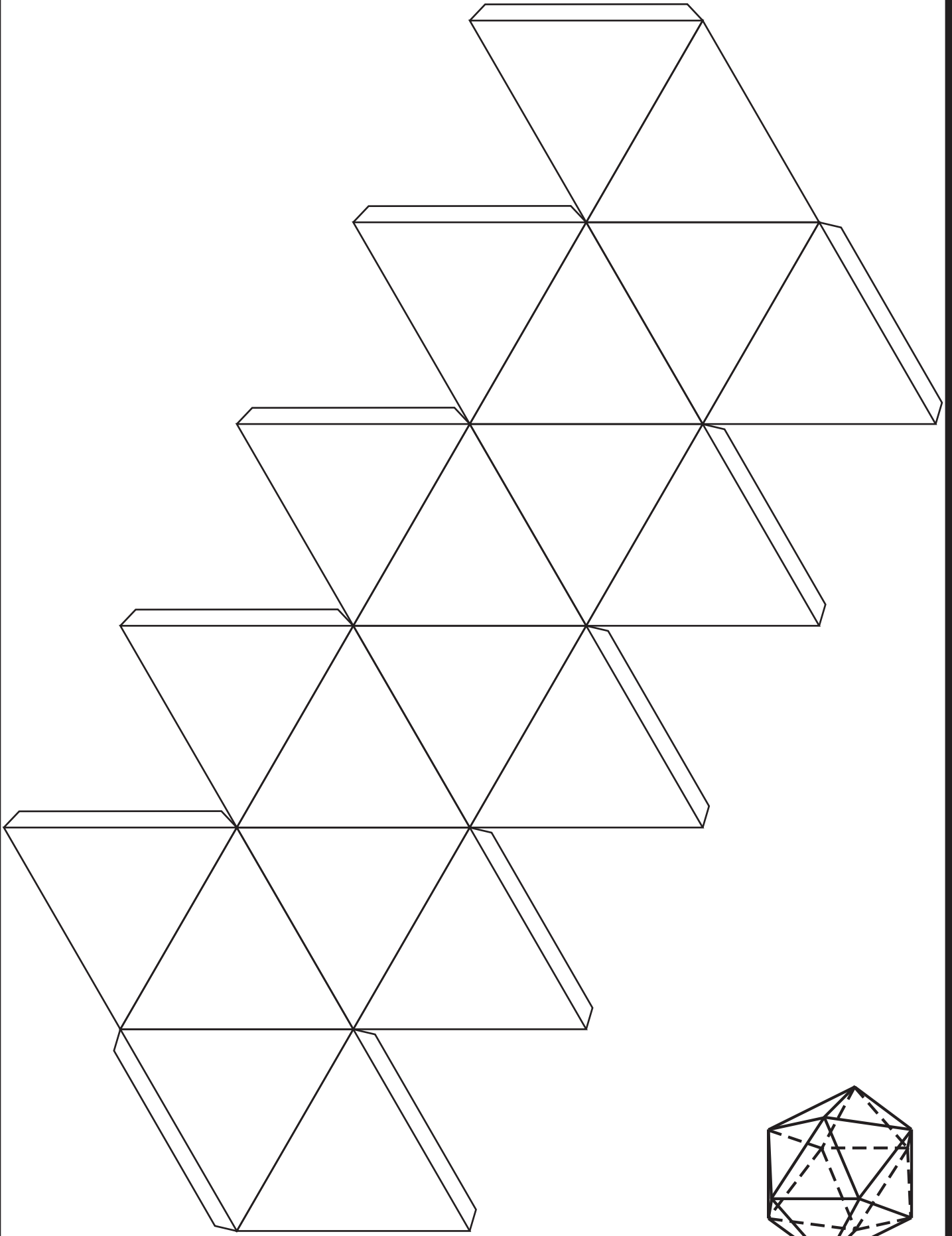


PLATONIC SOLIDS:  
REGULAR HEXAHEDRON OR CUBE. Earth

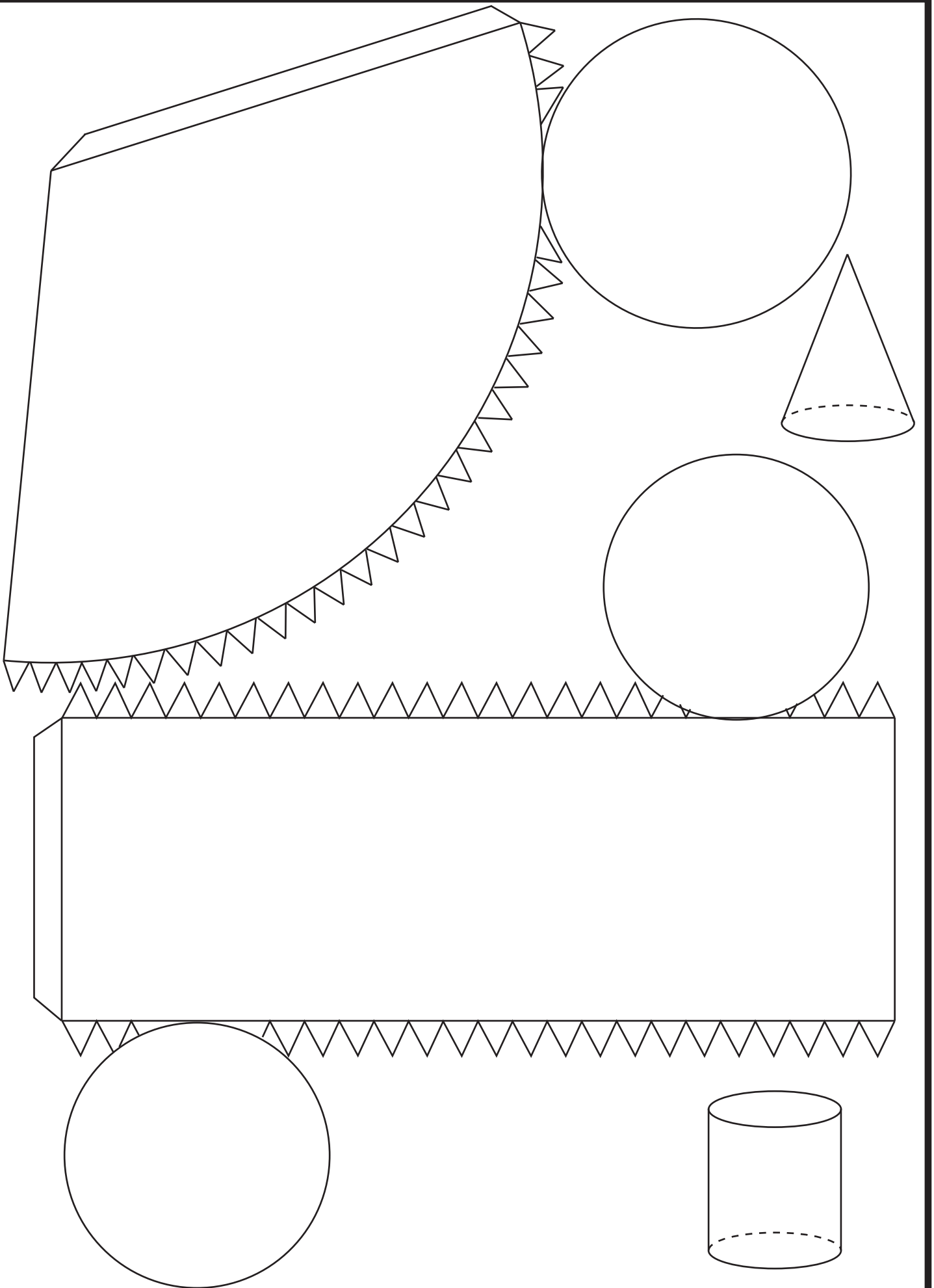


PLATONIC SOLIDS:  
REGULAR DODECAHEDRON : Universe



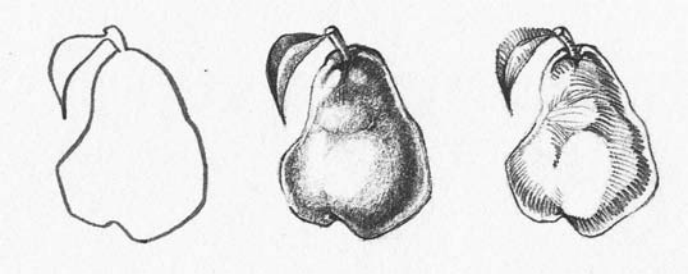


PLATONIC SOLIDS: REGULAR ICOSAHEDRON: Water



An outline drawing no colored or with no infill or shadows appears to be a flat shape. That is to say, It could be a drawing of a piece of paper, wood, paper or metal with a (flat) shape , with no volume. If, in an opposite way, we want to depict the volume of an object we must use chiaroscuro.

Three pictures of a piece of fruit are shown on the right. The first one consists of an outline drawing. The following two are depicted with a chiaroscuro infill which helps understand the fruit's volume; the middle drawing has been depicted with ranged shadows while the third one has been depicted with a line hatching.

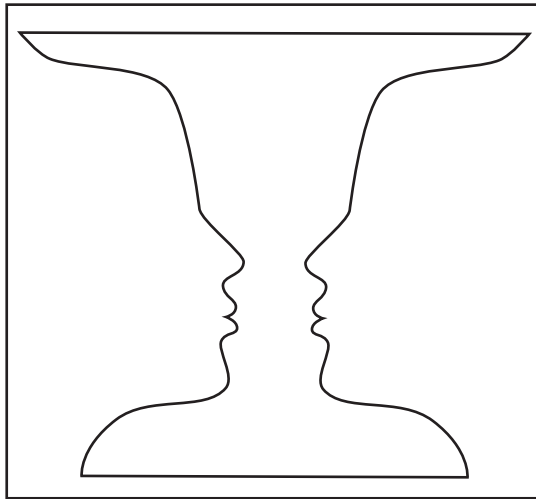


In this worksheet you will have to do the same thing as shown in the example but with an ambiguous figure that could be either a vase or cup or two faces staring to each other.

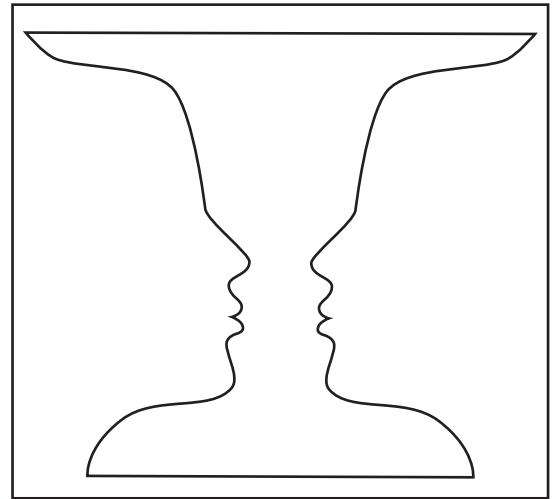
You will have to apply chiaroscuro to the white spot in order to break the ambiguity of the image. Do it twice: one of them with ranged shadows and the second with a line hatching as the example above shows.



Ambiguous figure:  
Two faces or a vase



Vase with ranged shadows (Shading)



Vase chiaroscuro with Hatching

Below you can see two grids in which you will have to draw a gray scales: one of them with a line hatching and the other with ranged solid colors. In both of them you don't have to touch (draw on) the first left box (white), the right box, the tenth, must be filled with black, the darkest black. In between you must draw the gray scale.

**GRAY SCALE WITH SOLID COLORS**

--	--	--	--	--	--	--	--	--	--

White

Black

**GRAY SCALE WITH A LINE HATCHING**

--	--	--	--	--	--	--	--	--	--

White

Black

You must use a black pencil or graphite lead pencil for this worksheet. If you use pencils with different hardnesses you will get a better exercise. Soft lead pencils are named with a B and a number, higher the number is, softer the lead will work. As soft as the lead is (6B, for instance) you will get a darker black easier.

Goup	Last names, Name	Date



laslaminaS.es

Worksheet title

28-VOLUME AND CHIAROSCURO/ SHADING SCALES